

# 冷光螢光照膠影像系統

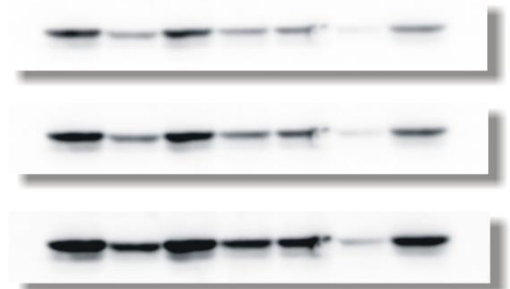
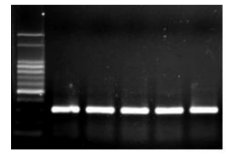
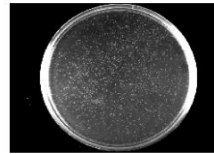
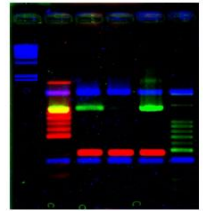
MultiGel-21<sup>®</sup> ( MGIS-21 Multi-function Gel Image System )

*Next Generation  
Chemiluminescence*

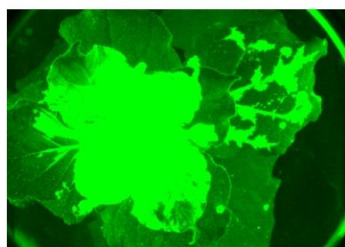
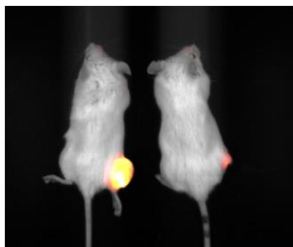
*Gel Documentation*

*Multi-color fluorescent*

*Real-time electrophoresis*



Western Blot

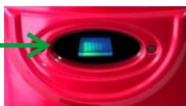
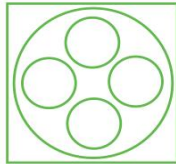
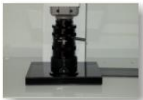


# 冷光螢光照膠影像系統

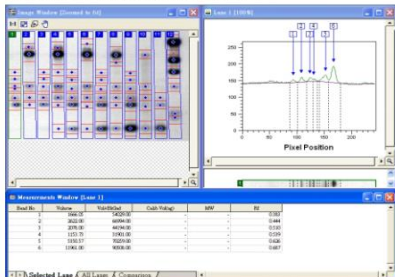
## MultiGel-21<sup>®</sup> ( MGIS-21-C2-4M Multi-function Gel Image System )



Filter selector:  
have 4 filter well can insert different wavelength filter, easy change,

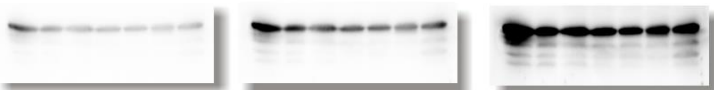


Quantitative software:



### Chemiluminescence

Time-Lapse capture can show different time exposure results and let weak bands to be more visible and clear



Western Blot

Multi-function Gel Image System has the function of traditional Gel Documentation and even can upgrade to multi-color fluorescent detection, Chemiluminescence analysis and Real-time electrophoresis.

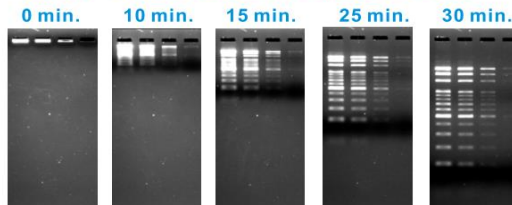
#### Specification:

- High sensitivity Cool CCD, grayscale image
- CCD Resolution: 2047(H) x 2047(V) , 4.19M pixels
- Image Resolution: 4094(H)x4094(V) , 16.76M pixels.
- Temperature difference = -40°C ( below ambient )
- filter selector(option ): mounted on top of machine, easy to insert filter or take off filter . 4 filter well, rotated selection, dark box. with EtBr filter (Option: other wavelength / SYBR Green filter, SYPRO Ruby filter)
- Quantitative resolution : 16Bits, 65536scale
- Dynamic range: > 4.8 orders of magnitude
- Dual wavelength: 600nm x 1ea, ( option : 530nm, 620nm )
- Exposure time : 0.001 seconds to 100,000 seconds (>40 hours).
- Application: EtBr Gel, SYBR Green Gel, SYPRO Orange Gel, SYPRO Ruby, western blot, X-ray film, TLC, Tissue Section, Commasie blue Gel, Colony plate, Realtime electrophoresis, Chemilluminescence.
- computer connection: be able to connect with notebook ,or PC
- Fixed focal lens : 50mm, f0.95 ,
- reflectance light: white ,8wX2. (option: UV light,254nm, 306nm, 365nm)
- safy door: automatic shut down UV when door is open, can switch to continue light on when door is open for gel cutting.
- quantitate each band intensity, can merge different color image, image calculation, area calculation, length calculation, 3D image display.
- Option: Flexible fluorescent lamp for real time electrophoresis or fluorescent sample, wavelength 425nm, 530nm , flexible tube, can be adjust any angle
- UV wavelength: 306nm, 15W x 6 tubes, fast lighting up, high and low intensity switch, UV view size =200x200mm (Option: other wavelength selection, 254nm, 365nm or dual-wavelength 254+365nm).
- Realtime Electrophoresis: continuously tracking and record the proceeding gel images, prevent DNA band run over from gel area.
- UV LightBox can move in and out freely . Convenience for cutting gel operation.
- 2 hand doors locate on the left and right side. UV resistant window open with 2 layer UV resistant protection.



- Integrate touch monitor save bench space and easy to operate can rotate for different angle
- Option: Multi-wavelength light source for Realtime electrophoresis or other fluorescence detection, 425nm, 530nm, selection. ( FLEX-425+530, FLEX-425, FLEX-530 )

### Real Time Electrophoresis



Time lapse run and view DNA bands and confirm PCR product in earlier time may positive or negative and to get an optimize gel bands pattern e.g. RAPD, pulse field



翰新國際有限公司  
Hycell International



TEL : (02) 2877-1122

hycellbio@gmail.com